

Cloud Computing and Mobile Access For Computer Aided Design

Helps students and professionals to be more productive
cad-notes.com | tentangcad.com

Profile

Publications

- AutoCAD expert on AutoCAD Exchange (2010)
- AUGI World writer (2012)
- AutoCAD Block Best Practices Author
- CAD-notes.com (founder)
- TentangCAD.com (founder)

Certifications

- Autodesk Revit Architecture 2010 certified Professional
- CATIA V5 Part Design Specialist

Current Responsibility

- PDM and PLM implementer (SmarTeam and Enovia)



Helps students and professionals to be more productive
cad-notes.com | tentangcad.com

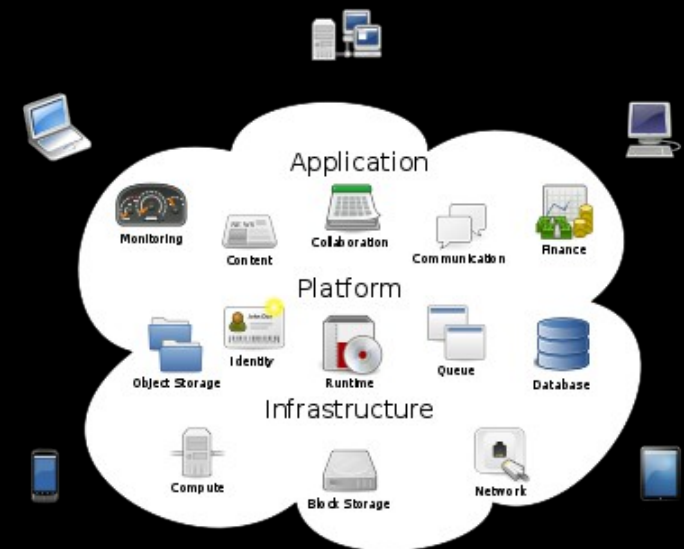
The future is already here,
it's just not evenly distributed
- William Gibson -

What is cloud computing?

Cloud computing is the delivery of computing and storage capacity as a service to a heterogeneous community of end-recipients. The name comes from the use of a cloud-shaped symbol as an abstraction for the complex infrastructure it contains in system diagrams. Cloud computing entrusts services with a user's data, software and computation over a network.

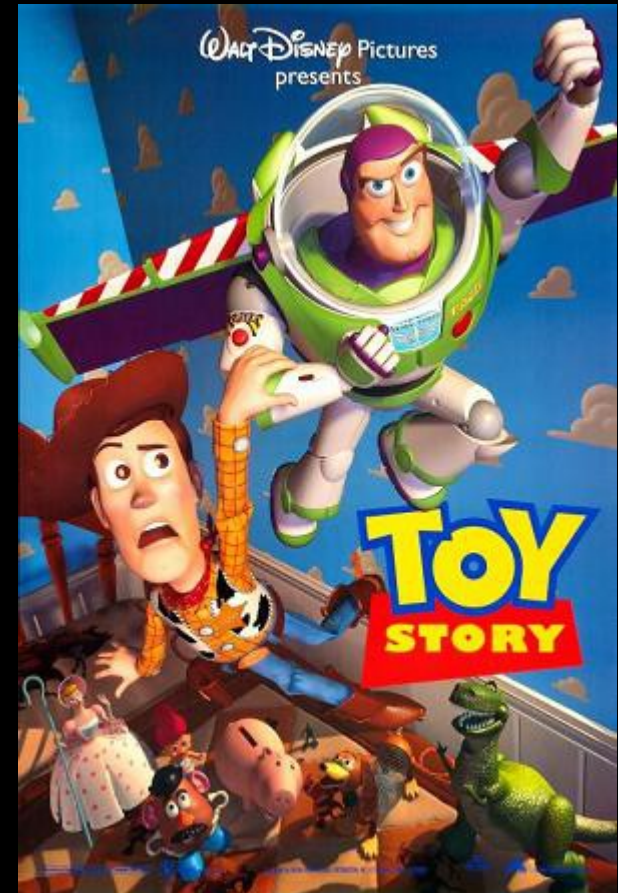
- There are three types of cloud computing:
 - Infrastructure as a Service (IaaS),
 - Platform as a Service (PaaS), and
 - Software as a Service (SaaS)

- Wikipedia



Rendering in the past

- "We take an average of three hours to draw a single frame on the fastest computer money can buy." - Steve Jobs
- Four years in the making, the 77-minute film required 800,000 machine-hours just to produce a final cut.-
Wired.com
- Pixar's "farm" of 300 Sun Microsystems computers has rendered onto film. - CNN.com



A problem that takes one CPU 10,000 seconds to solve costs about 16p. But with the scalability of the cloud, we can apply 10,000 CPUs to the same problem and they will solve it in a second. Solving the problem 10,000 times faster still costs 16p. Being able to apply infinitely more resources to a problem for no additional cost is a first in history. - Carl Bass

Basic Use of Cloud

- Accessibility:
Storage and sync, Collaboration (PDM/PLM, Mobile Application)



- Powerful computing:
Analysis, Rendering

Autodesk 360 basic

Features



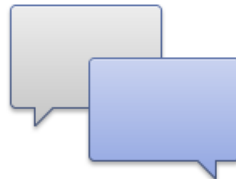
Storage

Store your design files online through your Autodesk® 360 account so you can access them anytime, anywhere. Get 3GB of free storage instantly by simply creating an account. Additional storage is available with Subscription.



Viewing

More easily share your design files with others—even if they lack the design software used to create the files. Users can view and edit 2D and 3D design files through a web browser using Autodesk 360, or via a mobile device using the Autodesk® Design Review, and AutoCAD® WS mobile apps.



Collaboration & Sharing

Easily share files, keep track of file updates, and invite others to comment on designs in the Autodesk® 360 collaboration workspace. Receive email notifications when files are edited or updated. You can also send a file link to other users so they can quickly access and edit work on the go.

Anything requires high performance and everywhere access



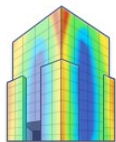
Rendering

Autodesk® 360 Rendering reduces time and cost through powerful cloud rendering services that enable users to improve design visualization by producing photorealistic images and panoramas—without tying up the desktop, or requiring specialized rendering hardware.



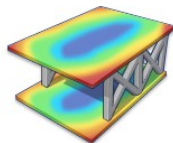
Optimization

Extend ideation and simulation beyond the desktop by testing the performance of different product design options with Autodesk® 360 Optimization for Autodesk® Inventor®. Users can continue working on other tasks while the service processes multiple simulations in the cloud.



Energy Analysis

Autodesk® 360 Energy Analysis for Autodesk® Revit® offers users cloud-based analysis tools to help them gain insight into energy consumption and building lifecycle costs early in the design process. The result is higher-quality products and more sustainable designs in less time.



Structural Analysis

Perform multiple statistical analyses for various building models or parts of a project in the cloud using Autodesk® 360 Structural Analysis for Autodesk® Revit®. Users benefit from the ability to calculate different variants of the same model, for example using differing materials, at the same time.

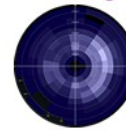


BIM 360 Glue

Autodesk BIM 360 Glue cloud-based BIM management solution provides easy, ubiquitous access to models, data, and workflows across authoring tools and project control applications.

Cloud-Enabled Products

Autodesk® Green Building Studio®

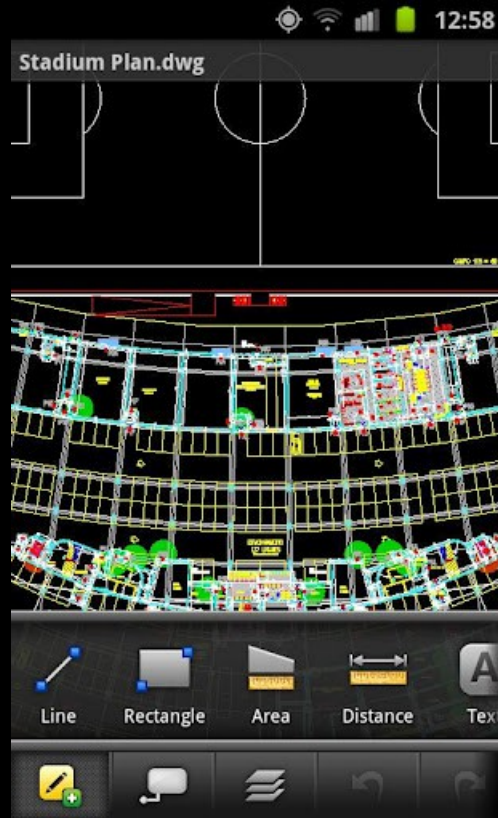


Green Building Studio

Autodesk® Green Building Studio® web-based energy analysis software can help architects and designers perform whole building analysis, optimize energy efficiency, and work toward carbon neutrality earlier in the design process. With faster, more accurate energy analysis of building design proposals, architects and designers can work with sustainability.

Helps students and professionals to be more productive
cad-notes.com | tentangcad.com

AutoCAD WS and Design Review Demo



Helps students and professionals to be more productive
cad-notes.com | tentangcad.com



Questions?

Helps students and professionals to be more productive
cad-notes.com | tentangcad.com



Thank you!

Helps students and professionals to be more productive
cad-notes.com | tentangcad.com